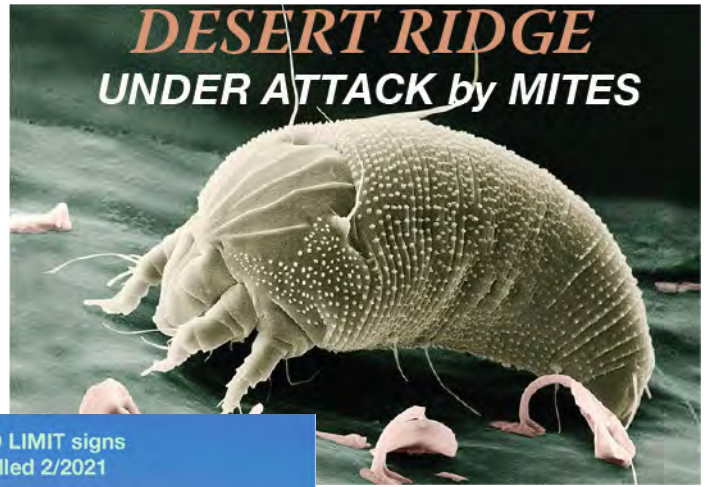


DESERT RIDGE Community Improvement Projects



Click on an image to enlarge with more details



HOLD OUR HILLS erosion control project 12/2022 - 12/2023 in 6 phases

Removed silt-filled RR tie dams, reconfigured spillway channels, added new 24" wide border channels inside-curbs - 8" rip rap rock fill prevents street spillover.

G.V. Decorative, larger 1" flow-slowing Coronado Brown rock, now covers common area hillsides behind 26 affected lots and 13 islands.

Using 520 tons of 1" and 156 tons of 8" rip rap, Total HOA cost: \$90,215. including \$20,440. maintenance-swap labor.

Contractor: Mochomo's - HOA supervisor: Dave Ward

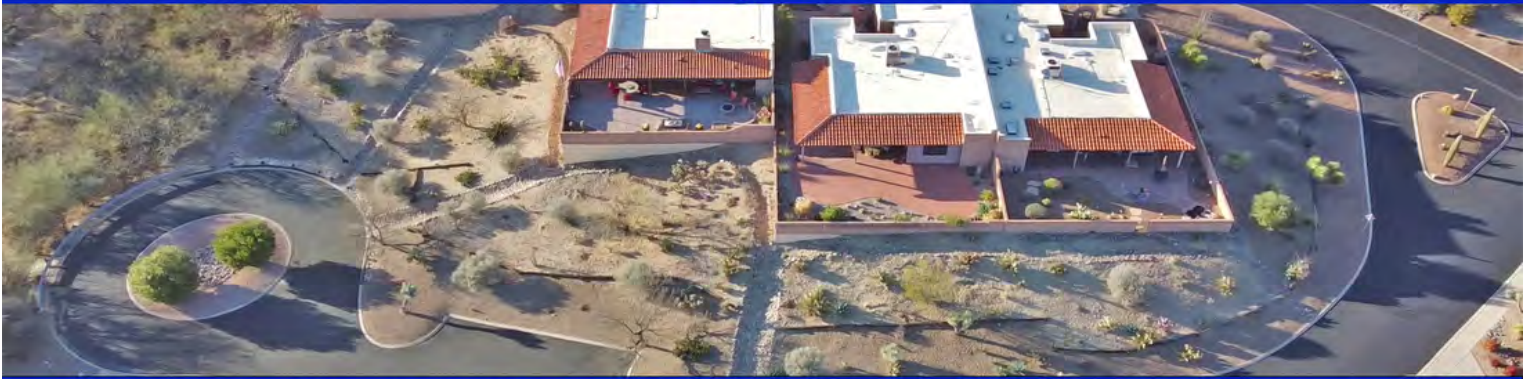


^^ Before ^^



HOLD OUR HILLS erosion control - Phase 2 Complete

Before



HOLD OUR HILLS erosion control - Phase 3 Complete



Approximately 110 bushes were cut back to 24" and sprayed repeatedly to eliminate mites. Most of the Texas Rangers grew back healthy in 2023 summer thanks to many volunteers.

MITE Attack UPDATE

Your neighbor-volunteers have cut-back and sprayed all of the infected Texas Rangers in the common areas. Weekly spraying will continue for a total of 3 applications.



Eriophyid Mite
Microscopic - too tiny to see



All of the refuse was hauled off by Mochomo's, our Maintenance contractor.

Homeowner - Now it's your turn !
PLEASE inspect the Texas Rangers in your front yard and inside your fences for infection. See examples on next page. Cut back infected plants to 24" high.

REGARDLESS...

DRENCH spray **ALL** your plants with the DAWN/ water spray - 3 times - Weekly starting March 1.



Sidewalk Renovations



This sidewalk replacement cost shared by adjacent homeowners

**Nov. - Dec. 2023
17 of 23 affected
homeowners paid
\$6,925 for their sidewalk
renovations. (90% participation by \$)
HOA paid \$4,000 for
common area sidewalk replacements.**

Four signs were installed in February 2021

Flashing SPEED LIMIT sign locations:
(See PLAT for extrapolated street number locations)

Southeast entry [2698 S Desert Ridge]

Central westbound [876 W Desert Hills Dr]

Central eastbound [969 W Desert Hills Dr]

West entry [1089 W Desert Hills Dr]

SPEED LIMIT signs Installed 2/2021

Flasher
Board
Housing

Solar
Panel

Lamp Assemblies
screw hand-tight
into Wiring Pipes

Wiring
Pipes



Utility Cabinet Repainting - May 2019

142 cabinets in 55 locations



Signage Changes



Street Signs Before & After - May 2019

After Refurbishment
May 2019



Thanks to
Mike Hudson &
Mike Hubbard



Before

New Entry Sign Lettering & Light Bars - April 2018



Entry Sign Lighting Converted to Solar Power

November 2014



**Conversion to Solar Power for
Entry Sign lighting - 11/2014.
Resulting in an average savings
of over \$300. per year
compared to TEP's 2014 \$480/year bill.**

**Solar Panel with
attached battery
& charge controller**